

2 Nos. BRAND NEW 3.88 MW EACH, DEUTZ MWM GAS ENGINE GENERATOR SETS AVAILABLE FOR SALE WITH IMMEDIATE DELIVERY:

Make : MWM (Deutz Power Systems)
 Type : TCG 2032 V 16
 Year of Make : 2008/9
 Capacity (of each engine) : 3.88 MW
 Power Generation : 11Kv, 50 Hz
 Packing : All Packed in original OEM Packing
 Exclusions : HT & LT table cooler, silencer and MV 11KV electrical panel

Technical details, scope of supply and all other information pertaining to the above generators is giving hereunder:-

Engine Data		
Manufacturer	DEUTZ Power Systems	
Engine Type	TCG 2032 V16	
Number of Cylinders	16	
Configuration	V 45°	
Working Principle	Four Stroke	
Piston Displacement	271.8	dm ³
Bore	260	mm
Stroke	320	mm
Nominal Speed	1000	rpm
Mean Piston Speed	10.7	m/s
Filling Capacity Water of Engine	570	dm ³
Filling Capacity Lube Oil (inc. Pipes, Heat Exchanger, Pan)	2200	dm ³
Mean Effective Pressure at Standard Power & Nom. Speed	17.7	bar
Compression Ratio	12.0 : 1	Epsilon
Jacket Water Temperature at Inlet / Outlet	78 / 90	°C
Jacket Water Flow	Min = 105 and Max = 135	m ³ /h
Exhaust Gas Temperature at Full Load	463	°C
Exhaust Gas Mass Flow Rate (Wet)	20898	kg/h
Permissible Exhaust Gas Back Pressure After the Engine	Min = 30 and Max = 50	mbar
Generator Data		
Manufacturer	AVK	
Generator Type	DIG 156 I/6	
Frequency	50	Hz
Voltage	11000	V
Current	254	A
Nominal Rating	4845	kVA
Voltage Range	± 5	%
Temperature Rise	F	
Isolation Class	F	
Protection Class	IP 23	
Nominal Speed	1000	rpm
Genset Weights and Dimensions²⁾		
Weight Empty	49800	kg
Width	2750	mm
Length	8880	mm
Height	3820	mm

2 Nos. BRAND NEW 3.88 MW EACH, DEUTZ MWM GAS ENGINE GENERATOR SETS AVAILABLE FOR SALE WITH IMMEDIATE DELIVERY:

Make	: MWM (Deutz Power Systems)
Type	: TCG 2032 V 16
Year of Make	: 2008/9
Capacity (of each engine)	: 3.88 MW
Power Generation	: 11Kv, 50 Hz
Packing	: All Packed in original OEM Packing
Exclusions	: HT & LT table cooler, silencer and MV 11KV electrical panel

Technical details, scope of supply and all other information pertaining to the above generators is giving hereunder:-

Technical details, scope of supply and all other information pertaining to the

above generators is giving hereunder:-

1) DESCRIPTION :

2 Nos. BRAND NEW 3.88 MW EACH, DEUTZ MWM GAS ENGINE GENERATOR SETS AVAILABLE FOR SALE WITH IMMEDIATE DELIVERY:

Make	: MWM (Deutz Power Systems)
Type	: TCG 2032 V 16
Year of Make	: 2008/9
Capacity (of each engine)	: 3.88 MW
Power Generation	: 11Kv, 50 Hz
Packing	: All Packed in original OEM Packing
Exclusions	: HT & LT table cooler, silencer and MV 11KV electrical panel

Technical details, scope of supply and all other information pertaining to the above generators is giving hereunder:-

1. Base engine

Modern stationary 4-stroke Otto gas engine with lean-mix combustion; 16 cylinder V-engine, water cooled with exhaust gas turbo mixture charging and mixture cooling; direction of rotation in accordance with DIN 6265, anti-clockwise (seen from flywheel side)

Crankcase

Sphero-cast case with added cooling water mantle, dimensionally stable due to high side walls; with suspended crankshaft and cross-bolted bearing seats; bottom mounting cylinder liners; short, cut-free lube oil supply bores from the hollow camshaft as main oil distribution pipes to all lubricating points; side drive room openings with quick-close covers; wet cylinder liners made from highly wear resistant special spun type casting; rotationally symmetrical, non warping liner support; crankcase ventilation via the oil trap

Driving gear

Crankshaft made from chrome molybdenum steel with screwed-on counterweights and hardened main and con-rod bearing pegs; double-ended con rods made from alloyed steel, forged with slanted toothed joint faces; oil supply for piston bolts and pistons through the drilled con rod, stepped piston bolt bearing for reduced bearing and piston damage, guide in piston; ESG (electron ray welded) light metal piston with asymmetric crowned compression ring, tapered compression piston ring and an oil scraper ring, all piston rings with highly wear resistant chrome coating; main and con-rod bearings as ready-to-install ternary bearings (steel support shells with leaded bronze, "sputtered" running surface); camshaft made from steel, bearings and cams hardened, bearing bushes made from aluminium alloy, drive via toothed wheels; flywheel,

Cylinder head

Individual cylinder heads made from special cast iron with false floor and cooling bores in the combustion chamber plate for mechanical and thermal relief; four valve and inserted seatrings, outlet seatrings water-cooled and armour-plated; mixture supply from the distributor line into the vee; exhaust gas conveyance on the same side upwards in the vee; new modular unit (Unit) made up of cylinder head, bushing and intermediate case with pistons and con-rods as well as manifold, exhaust, lube oil and cooling water pipe segments for easy installation and simple servicing; chamber spark plugs central in combustion chambers with intensive plug seat cooling

Valve drive

One toothed wheel driven hollow-drilled camshaft on each side of engine made up of individual components for each cylinder, simultaneous main lube oil distribution line; valve actuation for every 2 inlet & outlet valves, stop rod; toggle lever & valve bridge; o-ring oil seals on valve shafts

Ignition

Microprocessor-controlled high voltage ignition system with low voltage distribution; one ignition coil per cylinder; without moving parts; wear-free; triggered via the crown gear of the flywheel and a feeder on the camshaft; variable ignition times; firing power and distribution via computer to the primary side of the ignition coils; industrial engine or special spark plugs with greater running performance; durable Teflon spark plug connectors; firing power buffered by 24 V battery

Antiknock regulation

2 Nos. BRAND NEW 3.88 MW EACH, DEUTZ MWM GAS ENGINE GENERATOR SETS AVAILABLE FOR SALE WITH IMMEDIATE DELIVERY:

Make	: MWM (Deutz Power Systems)
Type	: TCG 2032 V 16
Year of Make	: 2008/9
Capacity (of each engine)	: 3.88 MW
Power Generation	: 11Kv, 50 Hz
Packing	: All Packed in original OEM Packing
Exclusions	: HT & LT table cooler, silencer and MV 11KV electrical panel

Technical details, scope of supply and all other information pertaining to the above generators is giving hereunder:-

Technical details, scope of supply and all other information pertaining to the

above generators is giving hereunder:-

2 Nos. BRAND NEW 3.88 MW EACH, DEUTZ MWM GAS ENGINE GENERATOR SETS AVAILABLE FOR SALE WITH IMMEDIATE DELIVERY:

Make	: MWM (Deutz Power Systems)
Type	: TCG 2032 V 16
Year of Make	: 2008/9
Capacity (of each engine)	: 3.88 MW
Power Generation	: 11Kv, 50 Hz

Knock sensor monitoring for each cylinder; individual cylinder ignition regulation, adjustment of gas-air mixture and engine power; knock-free operation with highest possible power output with highest efficiency whilst maintaining the emission limits

Carburetion

Air intake via paper dry-type air filters in the mixer; gas supply from the safety gas control line; dosing of the proportion of gas and air in the DEUTZ Power Systems multi-gas mixer

Mixture charging

Two exhaust gas turbochargers suck air and gas out of the gas mixer under atmospheric pressure; subsequent compression of the gas mixture and recooling in the 2-step mixture coolers (low temperature step in separate cooling circuit); rotary disc valve throttling device for each cylinder row after mixture cooler for power regulation

Gas mixture regulation and monitoring

Electronic regulation and monitoring of the air-gas mixture on the mixer servomotor via combustion chamber temperature (1 temperature sensor per cylinder) and the power/speed, summarised in the DEUTZ Power Systems TEM system.

Starter

1 compressed air starter turbine with integrated gearbox and 24V solenoid valve; pressure reduction station with ballcock and filter, as well as connections for turning engine compressed air supply and the gas control line electro-pneumatic valve; flanged to the engine casing

Lube oil system

Pressure lubrication using a gear pump, lube oil cooling in separate cooling circuit; oil filter in main flow; additional fine filter in bypass flow; automatic lube oil refilling in the oil pan through controlled intake; automatic pre-lubrication via electric pump; oil removal via same pump on the genset; lube oil pre-heating using separate electric circulation pump and plate heat exchanger.

Cooling water connections

Rubber compensators with companion flange for connection to the cooling water pipes

Exhaust gas connection

2 stainless steel compensators to be fixed using tightening clamps with respective weld-on flanges for connection to the exhaust gas pipe

Sensor technology/actuator technology and cabling

Sensors for cooling water temperature, suction intake air temperature, mixture temperature, oil temperature, oil level, oil pressure, speed, combustion chamber temperature, exhaust gas temperature, exhaust gas turbocharger speed, crankcase pressure, starter air pressure, gas mixer position logging, knock sensors, differential pressure crankcase ventilation fan and servomotor throttling device, servomotor gas mixer, control of cooling water pre-heater, spark plugs fully cabled to two central connection elements using detachable connections

Engine test run

The engines undergo an engine test run in the manufacturer's factory. The test runs take place on calibrated test stands. Testing procedure and content:

Testing - general

Engine installation and cabling in accordance with the design plan
Engine set-up on test stand with cold functions test

11KV

2 Nos. BRAND NEW 3.88 MW EACH, DEUTZ MWM GAS ENGINE GENERATOR SETS AVAILABLE FOR SALE WITH IMMEDIATE DELIVERY:

Make : MWM (Deutz Power Systems)
Type : TCG 2032 V 16
Year of Make : 2008/9
Capacity (of each engine) : 3.88 MW
Power Generation : 11Kv, 50 Hz
Packing : All Packed in original OEM Packing
Exclusions : HT & LT table cooler, silencer and MV 11KV electrical panel

Technical details, scope of supply and all other information pertaining to the above generators is giving hereunder:-

Technical details, scope of supply and all other information pertaining to the above generators is giving hereunder:-

Running-in the engine in accordance with the run-in programme			
Driving gear check			
Engine regulation and leak check			
Engine acceptance test			
60 min	100% power output	at rated speed	2 measurements
20 min	50% power output		1 measurement
Regulator trial	100% at zero load		
Measured value acceptance			
Speed, brake pressure, power output, consumption, regulator, exhaust gas temperature, suction intake air temperature, lube oil pressure, lube oil temperature, cooling water pressure, cooling water temperature, charge pressure, charge temperature, exhaust gas emissions (% O ₂ dry, mg/m ³ n NOx)			
Preservation			
Standard preservation of the engine to protect against corrosion during transportation and any subsequent storage at its destination. Maximum protection period of 6 months after delivery, when stored in a closed dry room.			

2 Nos. BRAND NEW 3.88 MW EACH, DEUTZ MWM GAS ENGINE GENERATOR SETS AVAILABLE FOR SALE WITH IMMEDIATE DELIVERY:

Make	: MWM (Deutz Power Systems)
Type	: TCG 2032 V 16
Year of Make	: 2008/9
Capacity (of each engine)	: 3.88 MW
Power Generation	: 11Kv, 50 Hz
Packing	: All Packed in original OEM Packing
Exclusions	: HT & LT table cooler, silencer and MV 11KV electrical panel

Technical details, scope of supply and all other information pertaining to the above generators is giving hereunder:-

Technical details, scope of supply and all other information pertaining to the

above generators is giving hereunder:-

2) SCOPE OF SUPPLY :

Manufacturer:	AVK
Type:	DIG 156 N/6, 11000 V, 50 Hz

Construction
The generator consists of the main generator as the internal pole machine and the exciter generator as the external pole machine. The power supply of the voltage regulator is produced in conjunction with the rated voltage.

Stator
The stator casing is designed as a weldment. The stator package is made from hydraulically compressed matt dynamo sheet and has been compressed together with the stator to form a compact unit by using pressure plates. The stator winding corresponds to insulation class F in accordance with VDE 0530/IEC 34. The end windings and connections are supported by suitable fastenings and are mechanically connected to one another, which protects them against dynamic stress from electrodynamic forces.

Rotor
The rotor consists of the shaft and the main magnet wheel. The main magnet wheel – in salient pole design – is made of hydraulically compressed sheet metal or steel plate. A dampening cage made from copper is installed as standard, which is electrically connected to the pole shoes as well as between the poles. The main rotor windings are made from flat copper and are protected against centrifugal forces by suitable components.
The rotor winding corresponds to insulation class F in accordance with VDE 0530/IEC 34.
The rotor is balanced with half feather keys in accordance with VDE 0530/IEC 34, part 14.

Bearing plates
The bearing plates are welded or made from cast iron. The generator feet are attached directly under the bearings in accordance with the design.

2 Nos. BRAND NEW 3.88 MW EACH, DEUTZ MWM GAS ENGINE GENERATOR SETS AVAILABLE FOR SALE WITH IMMEDIATE DELIVERY:

Make	: MWM (Deutz Power Systems)
Type	: TCG 2032 V 16
Year of Make	: 2008/9
Capacity (of each engine)	: 3.88 MW
Power Generation	: 11Kv, 50 Hz
Packing	: All Packed in original OEM Packing
Exclusions	: HT & LT table cooler, silencer and MV 11KV electrical panel

Technical details, scope of supply and all other information pertaining to the above generators is giving hereunder:-

Technical details, scope of supply and all other information pertaining to the

above generators is giving hereunder:-

2 Nos. BRAND NEW 3.88 MW EACH, DEUTZ MWM GAS ENGINE GENERATOR SETS AVAILABLE FOR SALE WITH IMMEDIATE DELIVERY:

Make : MWM (Deutz Power Systems)
 Type : TCG 2032 V 16
 Year of Make : 2008/9
 Capacity (of each engine) : 3.88 MW
 Power Generation : 11Kv, 50 Hz
 Packing : All Packed in original OEM Packing

V 11KV

Bearings

Anti-friction bearings on the drive side designed as detachable bearings and on the non-drive side as fixed bearings.

Regulations, Standards

Construction regulations VDE 0530, IEC 34 (EN 60034), ISO 8528-3

Components/modules/standard design

Large size terminal box for installation of current transformers. Terminal boxes with cable sockets and cable strain relief.

Electronic regulation

Base module "Cosimat N+":

- Highly stable current regulation
- PID control characteristic setting
- Reactive current dependent droop
- Under speed protection through U/F function
- Connection for function components

Function components

Cos-phi regulator	Cos phi trimmer <ul style="list-style-type: none"> • The power factor of the regulated generator is the same as that of the overall current or the current of the other generators (depending on the current transformer connection) • Suitable for parallel operation with generators without linear voltage droop • Generators protected via adjustable over and under excitation margins • Setpoint adjustment using potentiometer or voltage signal 4 ... 20 mA
Voltage trimmer	Automatic synchronous trimmer <ul style="list-style-type: none"> • Automatic trimming of generator idling speed voltage to the supply voltage before synchronisation • Saves separate voltage trimming by additional devices in the switching system
Exciter and diode monitoring	Exciter system monitoring – D.C. relay; Supplied loose for installation the monitoring/electric control panel <ul style="list-style-type: none"> • Recording of over and under excitation states • Recording of errors in the rotating diodes using the irregularity of the exciter D.C. current
Voltage setpoint regulator	The adjustable voltage potentiometer (500 Ohm) for manual voltage adjustment is supplied loose for installation in the electrical control panel
Droop current transformer	For parallel operation with the power supply and with one another, installed in the generator
Stationary heating	Installed in the generator
Temperature monitoring	6 PT 100 sensor for winding

2 Nos. BRAND NEW 3.88 MW EACH, DEUTZ MWM GAS ENGINE GENERATOR SETS AVAILABLE FOR SALE WITH IMMEDIATE DELIVERY:

Make	: MWM (Deutz Power Systems)
Type	: TCG 2032 V 16
Year of Make	: 2008/9
Capacity (of each engine)	: 3.88 MW
Power Generation	: 11Kv, 50 Hz
Packing	: All Packed in original OEM Packing
Exclusions	: HT & LT table cooler, silencer and MV 11KV electrical panel

Technical details, scope of supply and all other information pertaining to the above generators is giving hereunder:-

Technical details, scope of supply and all other information pertaining to the

above generators is giving hereunder:-

2 Nos. BRAND NEW 3.88 MW EACH, DEUTZ MWM GAS ENGINE GENERATOR SETS AVAILABLE FOR SALE WITH IMMEDIATE DELIVERY:

Make	: MWM (Deutz Power Systems)
Type	: TCG 2032 V 16
Year of Make	: 2008/9
Capacity (of each engine)	: 3.88 MW
Power Generation	: 11Kv, 50 Hz
Packing	: All Packed in original OEM Packing
Exclusions	: HT & LT table cooler, silencer and MV 11KV electrical panel

Technical details, scope of supply and all other information pertaining to the

Electrical data and properties

Voltage operating range	Between 95 ... 105 % of the rated voltage
Voltage adjustment range	+/- 5 % rated voltage for continuous operation +/- 10 % short-term (testing or synchronisation)
Voltage accuracy, static	+/- 0,5 ... 1 %
Continuous short circuit current	With 3-pole terminal short circuit minimum 3 x rated current for 3 s
Overload capacity or Overspeed	10 % for 1 hr, within 6 hrs In accordance with IEC 34/VDE 0530, i.e. 50 % for 30 s. In accordance with VDE 0530 for 1.2 times rated speed for 2 min

2.2 Genset components

Base frame

Steel bend and torsion-resistant construction to take the engine and the generator. Elastic bearings are mounted under the base frame.

Coupling

High-stretch, axial plug-in flange coupling for torsional elastic connection of engine and generator. The disc-shaped rubber body cushions torsional oscillations to a large extent. The rubber element is radially interchangeable.

Oil level regulation

Tank mounted on the base frame and connected to / communicating with the oil pan. Dip sensor integrated into the tank with contacts for oil level monitoring (min./max.) or to control solenoid valves and fresh oil pump for automatic lube oil refilling.

Pre-lube pump

Pre-lubrication through an electric pump on the genset; emptying also possible with the same pump after changing the position of a built-in three-way tap

Cooling water pre-heating

Electrical cooling water pre-heating (heat power output approx. 18 kW) with circulating pump, integrated into the genset and fully cased

Additional genset parts

The following list of components are supplied "loose" and are not mounted on the genset. Installation must be carried out on site by the client if installation of these components by DEUTZ Power Systems is not listed in the services and supply index (see section 3.12).

- 1 set of maintenance-free steel springs with height adjustment for easy alignment of the genset on the on site foundation. Vibration insulation of approx. 88 - 94 % is achieved with these bearings. Structure-borne noise is reduced by a rubber woven plate on the underside of the bearings.
- 2 solenoid valves with connections for lube oil inflow
- 1 fan for ventilating the crankcase with integrated filtering of the oil spray fumes to dispose of the exhaust air

2 Nos. BRAND NEW 3.88 MW EACH, DEUTZ MWM GAS ENGINE GENERATOR SETS AVAILABLE FOR SALE WITH IMMEDIATE DELIVERY:

Make	: MWM (Deutz Power Systems)
Type	: TCG 2032 V 16
Year of Make	: 2008/9
Capacity (of each engine)	: 3.88 MW
Power Generation	: 11Kv, 50 Hz
Packing	: All Packed in original OEM Packing
Exclusions	: HT & LT table cooler, silencer and MV 11KV electrical panel

Technical details, scope of supply and all other information pertaining to the above generators is giving hereunder:-

Technical details, scope of supply and all other information pertaining to the

above generators is giving hereunder:-

2 Nos. BRAND NEW 3.88 MW EACH, DEUTZ MWM GAS ENGINE GENERATOR SETS AVAILABLE FOR SALE WITH IMMEDIATE DELIVERY:

Make	: MWM (Deutz Power Systems)
Type	: TCG 2032 V 16
Year of Make	: 2008/9
Capacity (of each engine)	: 3.88 MW
Power Generation	: 11Kv, 50 Hz
Packing	: All Packed in original OEM Packing
Exclusions	: HT & LT table cooler, silencer and MV 11KV electrical panel

- 1 differential pressure sensor to monitor the crankcase ventilation fan
- 1 tin of RAL 5010 repair paint

2.2.1 Air preheater and filter unit

The combustion pre-heater provides a constant combustion air temperature in the engine suction line. The following components are within the scope of supply and are supplied "loose".

- 1 unit consisting of two casings (one casing for each cylinder row) in which an air-water heat exchanger and 4 filter plates are installed. The filter plates are fitted with easily detachable covers for quick and easy, tool-less exchange. For easy monitoring of the filter plate contamination, a pressure gauge is fitted in the casing to display low pressure.
- 2 durable special hoses for connection between the gas mixer and the air pre-heating unit
- 4 hose clips to fix the special hoses
- 1 three-way valve DN 32 for regulating the amount of cooling water in the air-water heat exchanger

2.3 Genset assembly

Installation

Gas engine and generator elastically coupled, mounted on the same base frame, for vibration-proof installation via springs on the on-site foundation.

2.4 Zero-pressure gas control line with connection accessories

Loose supply, on-site installation

Gas type: Natural Gas
Nominal width: DN 100-125

Safety gas control line as a compact unit in accordance with the DVGW certification body Operating side with gas flow direction to the right (option to the left), consists of:

- 1 ballcock
- 1 gas filter
- 1 pressure gauge
- 1 pressure sensor
- 2 solenoid valves
- 1 zero-pressure regulator
- 1 outlet fitting
- 2 companion flanges for installing the gas control line in the gas pipe

The gas control line is designed for a gas flow pressure of Min = 130 mbar and Max = 150 mbar, deviation frequency < 1/6 min.

The gas control line components can vary slightly according to the type of gas and operation. If an order is placed, the separate itemised list is binding.

2.5 TEM EVO System

The DEUTZ Power Systems Total Electronic Management (TEM) system includes the control and monitoring of all functions of a gas engine and the engine auxiliary drive in one unit. Through the monitoring functions it protects the engine against unauthorised boundary states and guarantees long service life. The TEM EVO system regulates and optimises the gas combustion in the cylinders. Integrated control functions ensure optimised and reproducible engine values in all operating conditions. Through a wide range of options it is possible to adapt the TEM EVO

**2 Nos. BRAND NEW 3.88 MW EACH, DEUTZ MWM GAS ENGINE
GENERATOR SETS AVAILABLE FOR SALE WITH IMMEDIATE
DELIVERY:**

Make	: MWM (Deutz Power Systems)
Type	: TCG 2032 V 16
Year of Make	: 2008/9
Capacity (of each engine)	: 3.88 MW
Power Generation	: 11Kv, 50 Hz
Packing	: All Packed in original OEM Packing
Exclusions	: HT & LT table cooler, silencer and MV 11KV electrical panel

Technical details, scope of supply and all other information pertaining to the
above generators is giving hereunder:-

Technical details, scope of supply and all other information pertaining to the

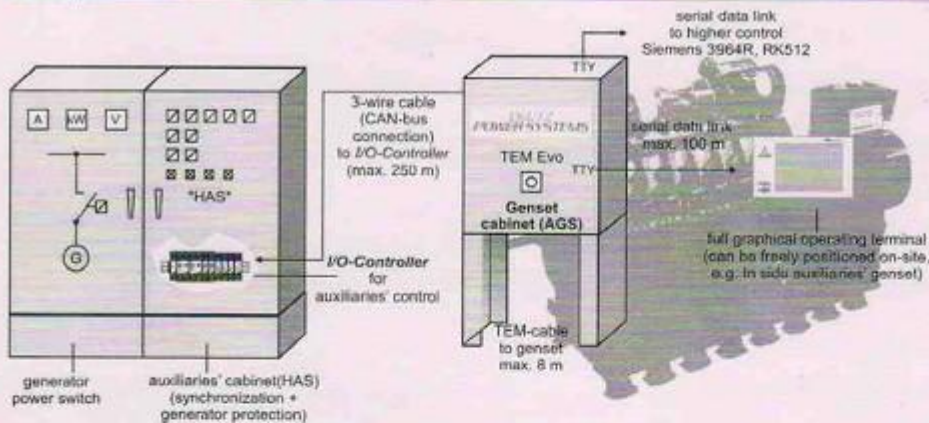
above generators is giving hereunder:-

2 Nos. BRAND NEW 3.88 MW EACH, DEUTZ MWM GAS ENGINE GENERATOR SETS AVAILABLE FOR SALE WITH IMMEDIATE DELIVERY:

Make	: MWM (Deutz Power Systems)
Type	: TCG 2032 V 16
Year of Make	: 2008/9
Capacity (of each engine)	: 3.88 MW
Power Generation	: 11Kv, 50 Hz
Packing	: All Packed in original OEM Packing
Exclusions	: HT & LT table cooler, silencer and MV 11KV electrical panel

system optimally to suit specific applications. For a generator genset provision need only be made for contactors, a synchronisation device, generator/mains protection and a wattmeter in auxiliary genset switch cabinet over and above TEM EVO system.

Set-up



The TEM-EVO system consists of the following components:

Genset control cabinet (AGS)

I/O controller

Operating terminal

Base functions

- Automatic Start and Stop programme process for the gas engine genset
- Reliable regulation of the exhaust gas emissions at lower values
- Integrated digital speed and power output regulation
- TÜV-certified safety chain
- Connection of actuators and sensors on the I/O controller in auxiliary genset cabinet and data transfer via CAN-Bus to TEM EVO genset cabinet
- Monitoring of all sensors on the genset
- Monitoring of engine cooling water
- Control and monitoring of lube oil circuit including oil pre- and post-lubrication and oil change
- Test mode for checking the connected actuators, sensors and auxiliary gensets
- Electronic line recorders for measured values for checking and diagnosis purposes over periods from 40h/6min as well as synchronous to the working cycle
- Electronic operation log for recording warning, error or operation messages with date and time for detailed monitoring of operation
- Electronic operating hour counter with breakdown in 5 load ranges
- Ability to connect an operating terminal
- [MK] Engine cooling water regulation: Through actuation of a three-way valve, the cooling water circuit regulation ensures optimum cooling water temperature. With part load, an increase of the cooling water inlet temperature occurs.

2 Nos. BRAND NEW 3.88 MW EACH, DEUTZ MWM GAS ENGINE GENERATOR SETS AVAILABLE FOR SALE WITH IMMEDIATE DELIVERY:

Make	: MWM (Deutz Power Systems)
Type	: TCG 2032 V 16
Year of Make	: 2008/9
Capacity (of each engine)	: 3.88 MW
Power Generation	: 11Kv, 50 Hz
Packing	: All Packed in original OEM Packing
Exclusions	: HT & LT table cooler, silencer and MV 11KV electrical panel

Technical details, scope of supply and all other information pertaining to the above generators is giving hereunder:-

Technical details, scope of supply and all other information pertaining to the

above generators is giving hereunder:-

2 Nos. BRAND NEW 3.88 MW EACH, DEUTZ MWM GAS ENGINE GENERATOR SETS AVAILABLE FOR SALE WITH IMMEDIATE DELIVERY:

Make	: MWM (Deutz Power Systems)
Type	: TCG 2032 V 16
Year of Make	: 2008/9
Capacity (of each engine)	: 3.88 MW
Power Generation	: 11Kv, 50 Hz
Packing	: All Packed in original OEM Packing

- [GK] Mixture cooling circuit: Regulation of the mixture cooling water inlet temperature through actuation of a control valve in the mixture cooling water circuit; monitoring of the receiver temperature.
- [SER] Serial coupling for data exchange: Exchange of data e.g. setpoints, measured values, messages, alarms and faults with superior control via serial coupling using protocol 3964R with RK512 via TTY or CS 20mA. The maximum cable length between the TEM EVO and the superior control must not exceed 100 m.
- [IOC] I/O controller: The auxiliary gensets, pumps, valves etc, are controlled via the I/O controller and the related measured values recorded. The I/O controller is supplied loose for installation into the auxiliary genset switch cabinet.
- [16M] 16 parametrizable messages: Digital entries with extensive parametrizing options, in order to be able to connect system-specific faults, alarms or messages directly to the TEM EVO system. With this, the monitoring of a genset is considerably simplified and made much clearer through the recording function in the operation log. The parametrizable messages are additionally displayed as potential-free contacts (openers) in the TEM auxiliary genset switch cabinet on the I/O controller.
- [AKRK] Antiknock regulation: Highly dynamic antiknock regulation for each cylinder individually for safe operation of the engine even when using a gas of low methane number. Maximum high power at optimum efficiency whilst observing the emission limit values.
- [NATL2] Flexible monitoring of the exhaust gas temperature after exhaust gas turbocharger A and B: Display (mask, history, serial coupling) and flexible monitoring of the exhaust gas temperature after the exhaust gas turbocharger. If a parametrizable limit value is exceeded, a fault is released.
- [SATL2] Measurement and limitation of exhaust gas turbocharger speeds. Display (mask, history, serial coupling) and limitation of the exhaust gas turbocharger speeds.
- [GL] Monitoring of the generator bearing temperatures: Display (mask, history, serial coupling) and monitoring of both generator bearing temperatures. If a parametrizable limit value is exceeded, a fault or alarm is released.
- [GLT] The TEM-EVO measures and monitors the temperature of the main engine bearing for engine protection. Exceeding a limit value results in an alarm and finally in a fault.
- [AVW] The TEM-EVO controls the air inlet pre-heating by actuating the control valve of the pre-heating circuit. When pre-heating is requested the temperature of air inlet is controlled.
- [VAWT/VSWT] Measurement of heating water temperature before exhaust gas heat exchanger and before lube oil heat exchanger
- [SPC] Connection for maintenance PC: Robust service socket on the TEM EVO genset switch cabinet. With the connection of the maintenance PC, a control unit interrupts the connection to the operating terminal or modem. The TEM EVO system can then be operated via the maintenance PC.
- [2xNKAT] Display in mask of operator terminal and continuous monitoring of exhaust temperature after catalytic converter. Exceeding a parametrizable limit value for the exhaust temperature results in a fault.
-

11KV

Operation

An intelligent operating terminal allows access to all functions and thus easy operation of the TEM-Evo system. The operating terminal has a 15"-TFT touch display. The touch function of the operating terminal allows a simple and intuitive operation of the genset. With the navigator area the operator can change direct and fast into the de-sired mask to operate the genset. Every mask

2 Nos. BRAND NEW 3.88 MW EACH, DEUTZ MWM GAS ENGINE GENERATOR SETS AVAILABLE FOR SALE WITH IMMEDIATE DELIVERY:

Make	: MWM (Deutz Power Systems)
Type	: TCG 2032 V 16
Year of Make	: 2008/9
Capacity (of each engine)	: 3.88 MW
Power Generation	: 11Kv, 50 Hz
Packing	: All Packed in original OEM Packing
Exclusions	: HT & LT table cooler, silencer and MV 11KV electrical panel

Technical details, scope of supply and all other information pertaining to the above generators is giving hereunder:-

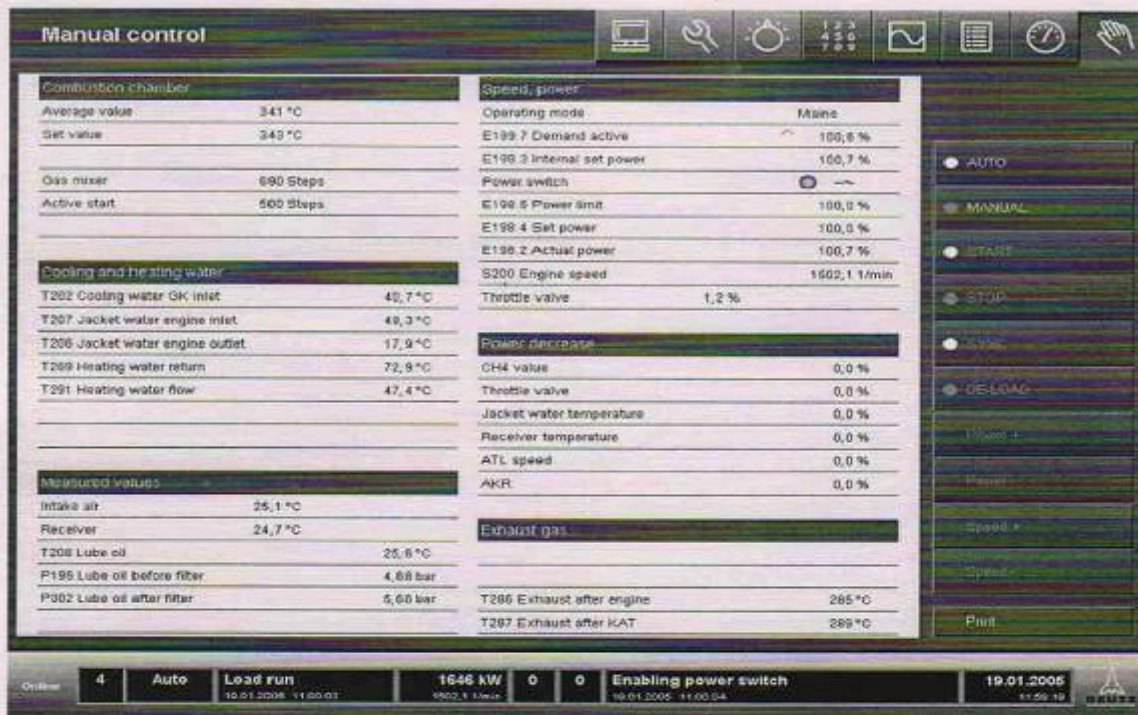
Technical details, scope of supply and all other information pertaining to the

above generators is giving hereunder:-

2 Nos. BRAND NEW 3.88 MW EACH, DEUTZ MWM GAS ENGINE GENERATOR SETS AVAILABLE FOR SALE WITH IMMEDIATE DELIVERY:

Make	: MWM (Deutz Power Systems)
Type	: TCG 2032 V 16
Year of Make	: 2008/9
Capacity (of each engine)	: 3.88 MW

shows the status line at the bottom with all major information of the genset status. All control, service and monitoring functions are easily operated without long training times. The operating unit can be freely located, as desired directly on the genset or at a distance of up to 100 m from the genset in a switchboard gallery. Configurations with operating terminals at each genset and/or a central operating terminal are also possible. The user can communicate with the system in his national language. The desired language can be activated by simply pressing a button. For service purposes, a different language than the language normally used by the users can be temporarily activated. All information and operating modes for usual operation are clearly represented in the mask "Manual control"



Operation log

The electronic operation log of the TEM EVO system makes the operation of the gas engine genset and its periphery very transparent through its recording function. All operating messages and operational switching processes as well as each parameter change are recorded with an exact time output (date/time).

In total the TEM EVO system can monitor and differentiate between over 600 events. This enables quick and detailed analysis of the operational behaviour of the genset including the auxiliary functions controlled by TEM EVO.

Diagnostics/Service functions

In addition to operation log, the TEM EVO system contains further diagnostic & service functions which contribute considerably to a higher availability of gas engine module. Even commissioning is considerably simplified and accelerated through these functions. This contributes decisively to overall efficiency of gas engine module. Service and diagnostic masks exist for:

- Auxiliary genset test mode
- Digital speed regulator
- Electronic ignition system
- Parametrizing
- Oil change
- Electronic operating hours counter
- Language and printer selection
- System setup (software versions, serial numbers, colour settings, screen savers etc.)
- There are currently further diagnostic/service masks available as options.

1KV

2 Nos. BRAND NEW 3.88 MW EACH, DEUTZ MWM GAS ENGINE GENERATOR SETS AVAILABLE FOR SALE WITH IMMEDIATE DELIVERY:

Make	: MWM (Deutz Power Systems)
Type	: TCG 2032 V 16
Year of Make	: 2008/9
Capacity (of each engine)	: 3.88 MW
Power Generation	: 11Kv, 50 Hz
Packing	: All Packed in original OEM Packing
Exclusions	: HT & LT table cooler, silencer and MV 11KV electrical panel

Technical details, scope of supply and all other information pertaining to the above generators is giving hereunder:-

Technical details, scope of supply and all other information pertaining to the

above generators is giving hereunder:-

3) SYSTEM COMPONENTS AND ASSOCIATED SERVICES :

2 Nos. BRAND NEW 3.88 MW EACH, DEUTZ MWM GAS ENGINE GENERATOR SETS AVAILABLE FOR SALE WITH IMMEDIATE DELIVERY:

Make	: MWM (Deutz Power Systems)
Type	: TCG 2032 V 16
Year of Make	: 2008/9
Capacity (of each engine)	: 3.88 MW
Power Generation	: 11Kv, 50 Hz
Packing	: All Packed in original OEM Packing
Exclusions	: HT & LT table cooler, silencer and MV 11KV electrical panel

Technical details, scope of supply and all other information pertaining to the above generators is giving hereunder:-

3. System components and associated services

3.1 Heat decoupling

3.1.1 Mixture cooling system (GK)

In the mixture cooling system, the warmth created by the compression of the combustion gas mixture in the exhaust gas turbocharger is transferred to a specially constructed heat exchanger. The first step (high temperature = HT) is integrated into the engine cooling circuit. The removal of heat in the second step (low temperature = LT) takes place via separate cooling circuits, due to the low temperature level.

The accumulated lube oil heat is also removed by transfer through a PHE to LT circuit.

Lube oil heat exchanger (GK)

1 Lube oil/cooling water plate heat exchanger; design in accordance with AD-Merkblatt (code of practice) / pressure device guidelines

Cooling water monitoring group (GK)

1 Pre-assembled monitoring group in a solid, painted steel casing with flange connections (no companion flanges and seals in scope of supply) for direct installation in the system pipe work.

Three-way control valve (GK)

1 Three-way control valve with actuator, designed as distributor valve

Expansion vessel (GK)

1 Diaphragm pressure extension vessel, build in, permission in accordance with EU pressure device regulation 97/23/EC, outside coated, diaphragm non-exchangeable

Differential pressure monitor for flow safety device (GK)

Differential pressure measuring and switching device with robust measuring equipment and damping throttle, pressure chamber, measuring diaphragm and seals, shrouding cover.

Temperature sensor

1 Temperature sensor (PT 100 with transmitter) with separate screw protection sleeve

3.1.2 Engine cooling water system (MK)

The heat created by the cylinder cooling when operating the gas engine is removed via the engine cooling water circuit.

Cooling water monitoring group (MK)

2 Nos. BRAND NEW 3.88 MW EACH, DEUTZ MWM GAS ENGINE GENERATOR SETS AVAILABLE FOR SALE WITH IMMEDIATE DELIVERY:

Make	: MWM (Deutz Power Systems)
Type	: TCG 2032 V 16
Year of Make	: 2008/9
Capacity (of each engine)	: 3.88 MW
Power Generation	: 11Kv, 50 Hz
Packing	: All Packed in original OEM Packing
Exclusions	: HT & LT table cooler, silencer and MV 11KV electrical panel

Technical details, scope of supply and all other information pertaining to the above generators is giving hereunder:-

Technical details, scope of supply and all other information pertaining to the

above generators is giving hereunder:-

2 Nos. BRAND NEW 3.88 MW EACH, DEUTZ MWM GAS ENGINE GENERATOR SETS AVAILABLE FOR SALE WITH IMMEDIATE DELIVERY:

Make	: MWM (Deutz Power Systems)
Type	: TCG 2032 V 16
Year of Make	: 2008/9
Capacity (of each engine)	: 3.88 MW
Power Generation	: 11Kv, 50 Hz
Packing	: All Packed in original OEM Packing

1 Pre-assembled monitoring group in a solid, painted steel casing with flange connections (no companion flanges and seals in scope of supply) for direct installation in the system pipe work.

Three-way control valve (MK)

1 Three-way control valve with actuator, designed as distributor valve

Expansion vessel (MK)

1 Diaphragm pressure extension vessel, build in, permission in accordance with EU pressure device regulation 97/23/EC, outside coated, diaphragm non-exchangeable

Differential pressure monitor for flow safety device (MK)

1 Differential pressure measuring and switching device with robust measuring equipment and damping throttle, pressure chamber, measuring diaphragm and seals, shrouding cover.

Temperature sensor

1 Temperature sensor (PT 100 with transmitter) with separate screw protection sleeve

3.2 Gas inlet pressure regulator

The function of the gas inlet pressure regulator is to reduce the mains network gas pressure to the maximum permitted input pressure for the zero-pressure control line at the connection point to the combustion gas supply feed pipe for the gas engine

Gas type: Natural Gas
Nominal width: DN 100 - 125

1 Inlet pressure safety gas control line as a compact unit in accordance with the DVGW certification.

Operating side with gas flow direction to the right (option to the left), consists of:

- 1 ballcock
- 1 pressure gauge
- 1 gas filter
- 1 pre-pressure regulator
- 1 safety shut-off valve (SAV) with final position switch for message "released"
- 1 safety blow-off valve (SBV)
- 1 ballcock for manual ventilation
- 1 outlet fitting
- 2 companion flanges for installing the gas control line into the gas pipe

Equipment can vary slightly, depending on the gas or operation type. If an order is placed, the separate itemised list is binding.

3.3 Exhaust gas system

Exhaust gas backpressure monitor

1 Pressure sensor for monitoring of the maximum permitted exhaust gas backpressure after the engine. For installation into the exhaust gas pipe after the engine (turbocharger) and before the oxidation-type catalytic converter or exhaust gas silencer.

Diaphragm pressure monitor, silicon-free, with microswitch; diaphragm: NBR; casing: synthetic glass fiber reinforced; casing underside: AISI die casting

MV 11KV

2 Nos. BRAND NEW 3.88 MW EACH, DEUTZ MWM GAS ENGINE GENERATOR SETS AVAILABLE FOR SALE WITH IMMEDIATE DELIVERY:

Make : MWM (Deutz Power Systems)
 Type : TCG 2032 V 16
 Year of Make : 2008/9
 Capacity (of each engine) : 3.88 MW
 Power Generation : 11Kv, 50 Hz
 Packing : All Packed in original OEM Packing
 Exclusions : HT & LT table cooler, silencer and MV 11KV electrical panel

Technical details, scope of supply and all other information pertaining to the above generators is giving hereunder:-

Technical details, scope of supply and all other information pertaining to the

above generators is giving hereunder:-

Scope of supply – 2 Nos. Gas Engine Generator (GEG) Packages			
Sl. No.	Description	Unit	Quantity
1.	Basic Generating Set Comprising of following:		
a.	Natural gas engine with accessories (Skid mounted)	Nos.	2
b.	Brushless double bearing Alternator, duly coupled with Engine 11 kV, 50 Hz@1000 RPM	Sets	2
c.	Standard Engine Maintenance Tools for Routine/Schedule Maintenance	Sets	1
d.	Steel Plate fabricated base frame	Sets	2
e.	Anti-Vibration Isolator & Flexible Couplings	Sets	2
2.	Air intake and Exhaust System for Engine		
a.	Intake Air Filter Dry type with restriction	Nos.	2

2 Nos. BRAND NEW 3.88 MW EACH, DEUTZ MWM GAS ENGINE GENERATOR SETS AVAILABLE FOR SALE WITH IMMEDIATE DELIVERY:

Make : MWM (Deutz Power Systems)
 Type : TCG 2032 V 16
 Year of Make : 2008/9
 Capacity (of each engine) : 3.88 MW
 Power Generation : 11Kv, 50 Hz
 Packing : All Packed in original OEM Packing
 Exclusions : HT & LT table cooler, silencer and MV 11KV electrical panel

Technical details, scope of supply and all other information pertaining to the above generators is giving hereunder:-

Technical details, scope of supply and all other information pertaining to the

above generators is giving hereunder:-

	indicator		
b.	Dry exhaust manifolds	Sets	2
3.	Cooling System		
a.	Jacket water pre-heater	Nos.	2
b.	Jacket water thermostatic control valve 3 way Modulating valve with Electronic Actuator	Nos.	2
c.	Additional Thermostatic control valve for the heat recovery from the jacket water	Nos.	2
d.	Mixture intercooler water thermostatic valve 3 way modulating valve with Electronic Actuator	Nos.	2
e.	Jacket cooling water supervision unit with level switch	Nos.	2
f.	Auto Venting Device & press, reducing valve	Nos.	2
g.	Differential pressure switch	Sets	2
h.	Expansion water tank (HT & LT)- 8 Nos. for HT & 8 Nos. for LT	Nos.	4
4.	Lube Oil System		
a.	L.O. priming pump, Engine mounted	Sets	2

2 Nos. BRAND NEW 3.88 MW EACH, DEUTZ MWM GAS ENGINE GENERATOR SETS AVAILABLE FOR SALE WITH IMMEDIATE DELIVERY:

Make : MWM (Deutz Power Systems)
 Type : TCG 2032 V 16
 Year of Make : 2008/9
 Capacity (of each engine) : 3.88 MW
 Power Generation : 11Kv, 50 Hz
 Packing : All Packed in original OEM Packing
 Exclusions : HT & LT table cooler, silencer and MV 11KV electrical panel

Technical details, scope of supply and all other information pertaining to the above generators is giving hereunder:-

Technical details, scope of supply and all other information pertaining to the

above generators is giving hereunder:-

b.	Lube Oil Cooler (plate heat exchanger)	Sets	2
c.	Lube Oil Filter, Engine Mounted wire edge filter combined with fine paper micro filter	Sets	2
d.	Two solenoid valves for automatic oil top-up	Sets	2
5. Starting System			
a.	Engine Pneumatic Starting Motor, Engine Mounted	Sets	2
6. Fuel Gas System			
a.	Gas Pressure control unit for pressure range 3 to 5 bar	Sets	2
b.	Pre-pressure regulator unit	Sets	2
c.	Flexible gas pipe	Sets	2
7. Electrical Power & Control System			
	PLC Panel, with Control Unit & Monitoring System for Electronic management system for all the engine controls	Sets	2

2 Nos. BRAND NEW 3.88 MW EACH, DEUTZ MWM GAS ENGINE GENERATOR SETS AVAILABLE FOR SALE WITH IMMEDIATE DELIVERY:

Make	: MWM (Deutz Power Systems)
Type	: TCG 2032 V 16
Year of Make	: 2008/9
Capacity (of each engine)	: 3.88 MW
Power Generation	: 11Kv, 50 Hz
Packing	: All Packed in original OEM Packing
Exclusions	: HT & LT table cooler, silencer and MV 11KV electrical panel

Technical details, scope of supply and all other information pertaining to the above generators is giving hereunder:-

Technical details, scope of supply and all other information pertaining to the

above generators is giving hereunder:-